



*Decision Support with Text*

Web: [www.ubiquiti.com](http://www.ubiquiti.com)  
Email: [info@ubiquiti.com](mailto:info@ubiquiti.com)  
Phone: (734) 997-8800  
Fax: (413) 622-3123

Ubiquiti Inc.  
122 South Main Street  
Suite 355  
Ann Arbor, MI 48104

### **360-Degree Forecasting and Alerting: Early Warning Systems**

Raw data and information feeds arise from a variety of sources, and all of these together provide useful information to identify issues and opportunities. Examples of such information sources include Repair Records, Warranty Claims, Surveys (e.g., J.D. Power & Assocs.), Safety Studies (e.g., NHTSA), Internal Manufacturing Floor Tests, External Suppliers Tests etc. Each source provides a different perspective on how various issues are emerging and playing out, but each source has its own data format and meaning associated with the values. Although the potential exists to utilize information from diverse sources to get a **360-degree view** of issues, it is also the case that leveraging the diverse information sources is easier said than done.

#### **Ubiquiti EWS Systems:**

More than the diversity of data formats, values and meanings, major problems arise in keeping track of the multiple different issues on which to get early warning **alerts**, and multiple different aspects on which to develop **forecasts** in order to predict and anticipate problems before they become unmanageable. A user-friendly system which allows users to set criteria for their alerts, and also to perform forecasts on multiple aspects together with the alerts, may prove very useful. In fact, a provision for Alerts and Forecasts, as applied to diverse information sources that can be examined in a unified manner – helps to develop the elements of an **"Early Warning System"**.

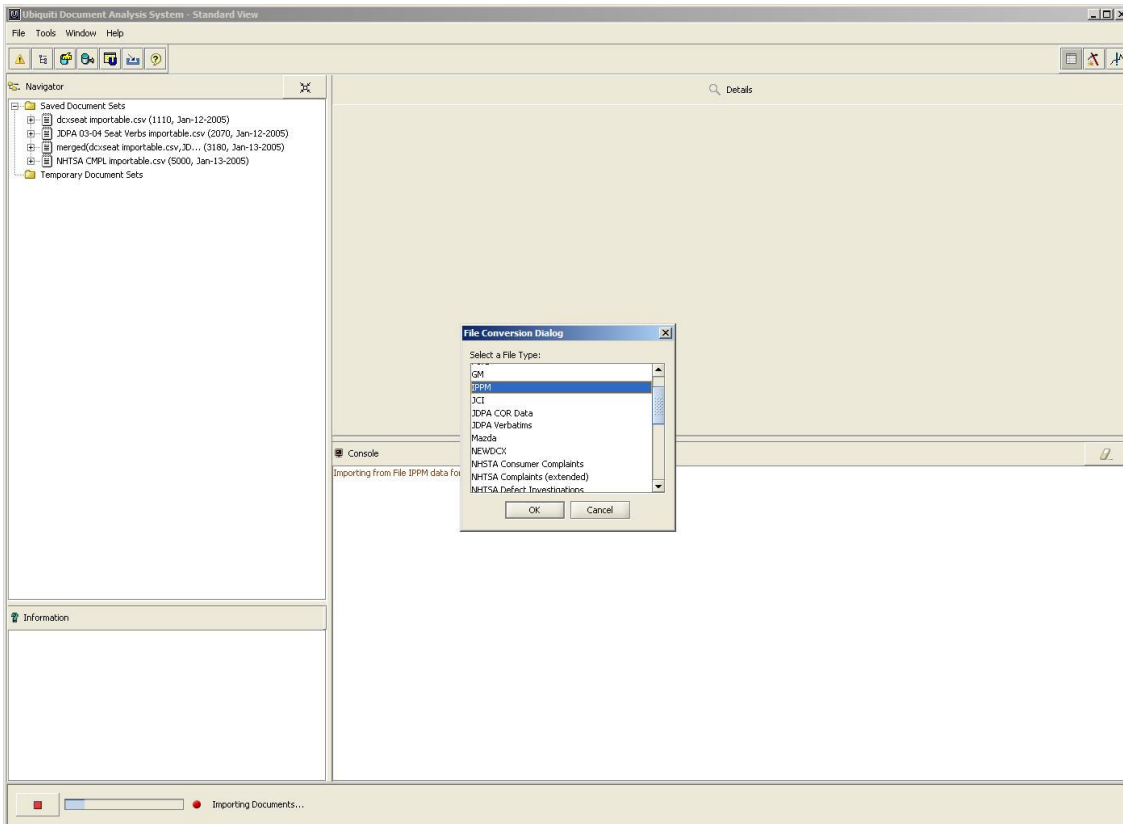
#### **Forecasts & Alerts:**

**Ubiquiti FAST (Forecasting & Alerts System Technologies)** provides users a means to analyze, forecast and get alerts on issues and opportunities as manifest in diverse information sources. Ubiquiti developed FAST starting with the ideas and technologies first developed for data records analysis software. Based on the needs evident in analyzing large sets of records, significant new functionality was developed in FAST for (a) setting, evaluating and viewing Alerts; (b) providing the means for Forecasts based on ontology-based information organization; and (c) utilizing diverse information sources. Additional techniques, algorithms, and features, upon request, can be included in the initial as well as the on-going configuration for the solution. Ubiquiti FAST is configured to interact seamlessly with Ubiquiti RADAR (which may be obtained separately).

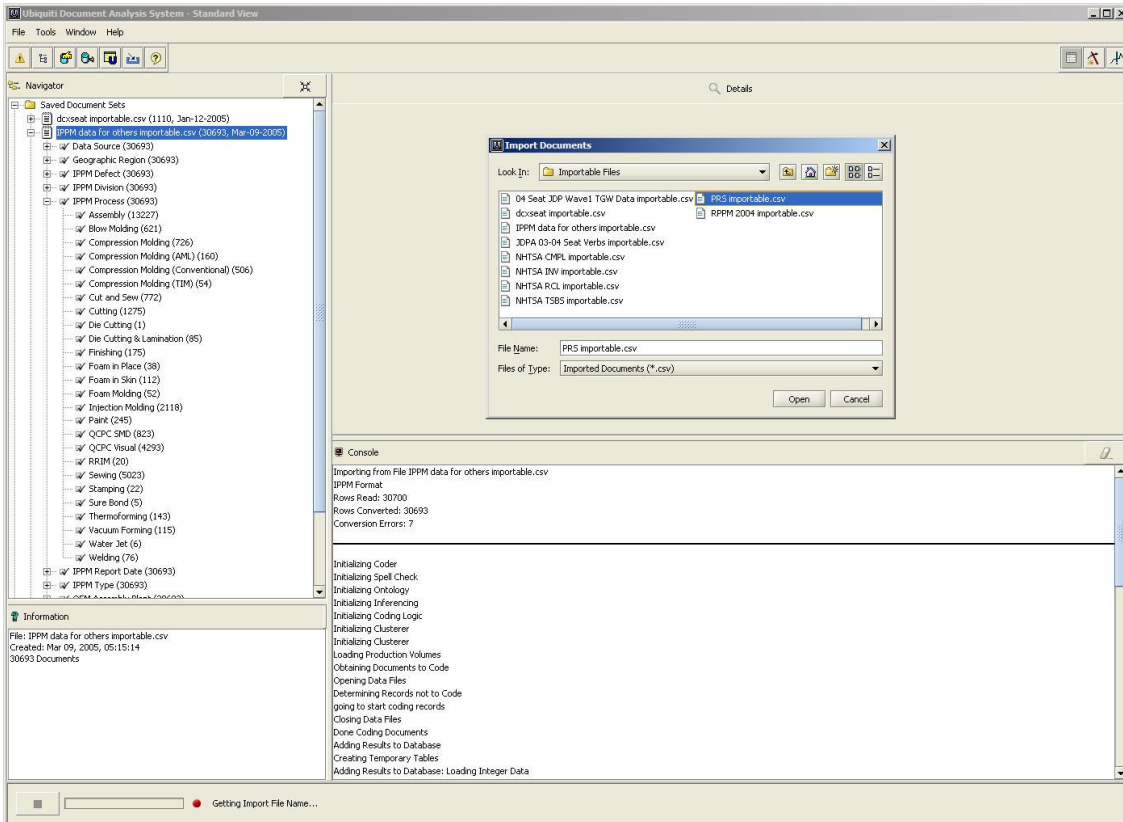
#### **Ubiquiti Guarantee:**

Ubiquiti is confident that its solutions will prove useful to our Customers. Ubiquiti gives a **no-risk unconditional money-back guarantee – if, for any reason whatsoever, a Customer chooses not to use Ubiquiti's solution within six months of starting, Ubiquiti will refund all moneys paid** (less that for Customer-specific customizations).

**(Screenshots from Ubiquiti FAST software provided on the following pages.)**



Screenshots from Ubiquiti FAST



Ubiquiti RADAR - Alert Definitions

File Tools Window Help

Alert Definitions

Alert ID	Condition ID	Function	Category	Breakdown	Relation	Value	Active
2	2.1	Average Cost	Engine Model	Model Year	GREATER THAN	500	<input checked="" type="checkbox"/>
5	5.1	Failure Rate (%)	Engine Manufacturer	None	GREATER THAN	5	<input checked="" type="checkbox"/>
7	7.1	Failure Rate (%)	Engine Manufacturer	System Code	GREATER THAN	5	<input type="checkbox"/>
8	8.1	Average Cost	Engine Sub-Model	Model Year	GREATER THAN	500	<input checked="" type="checkbox"/>

**Define an Alert**

Function: Cost per Unit

Category: Vehicle Sub-Model

Breakdown: (optional)

Relation: GREATER THAN

Value: 150

Alert Breakdowns:

- Model Year
- Repair Year
- Start Service Year
- System Code
- Years in Service

Cost per Unit for any Vehicle Sub-Model is greater than 150.0

Set Breakdown Clear Breakdown

OK Cancel

Ready

Screenshots from Ubiquiti FAST

Ubiquiti RADAR - Alerts View

File Tools Window Help

Alerts for eng\_02\_of\_64.csv | Evidence for Alert 2 from eng\_02\_of\_64.csv

Condition 1

Next Page Next Category Order Chronologically/Alphabetically Expand Category Horizon

Previous Page Previous Category Order Numerically Reduce Category Horizon

CAT from eng\_02\_of\_64.csv

Average Cost for any Engine Model broken down by Model Year is greater than 500.0

Model Year	CAT: 34000	CAT: 31000
2000	~730	~80
1997	~100	~250
1998	~60	~400
1999	~60	~80
2001	~0	~70
2002	~0	~40
2003	~0	~20
2004	~0	~10

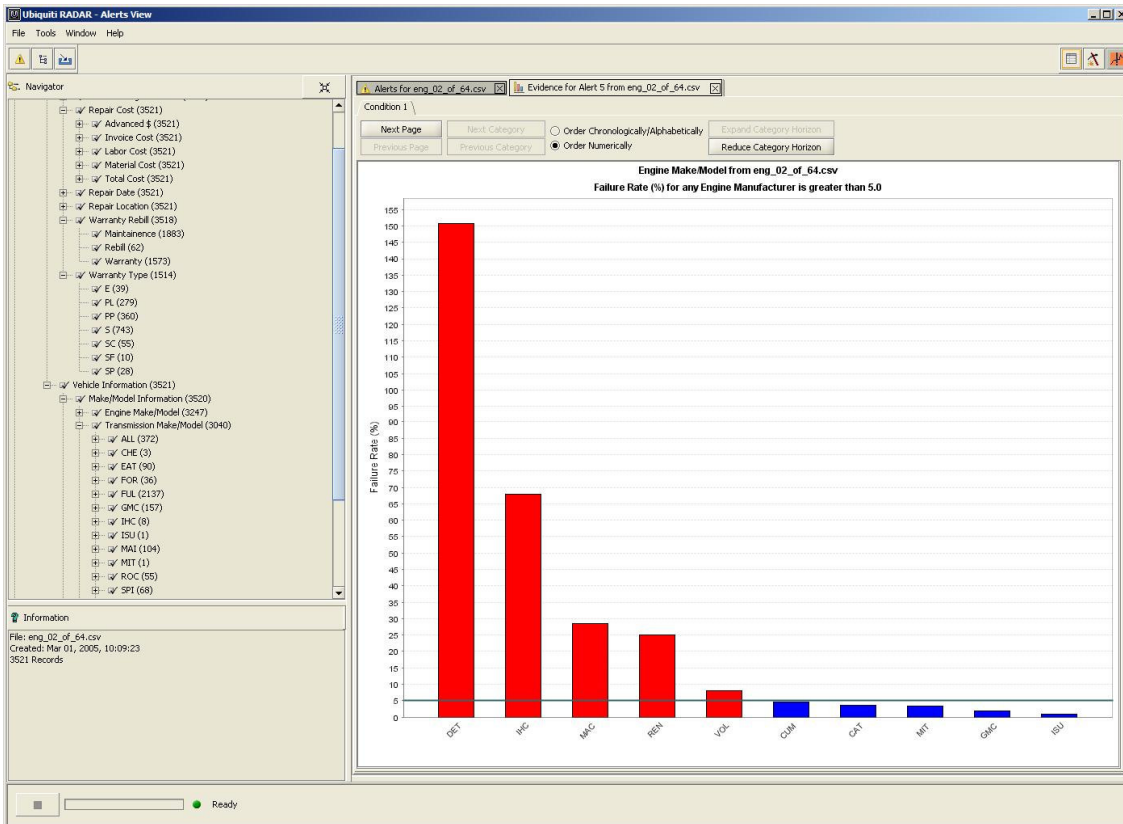
Information

File: eng\_02\_of\_64.csv

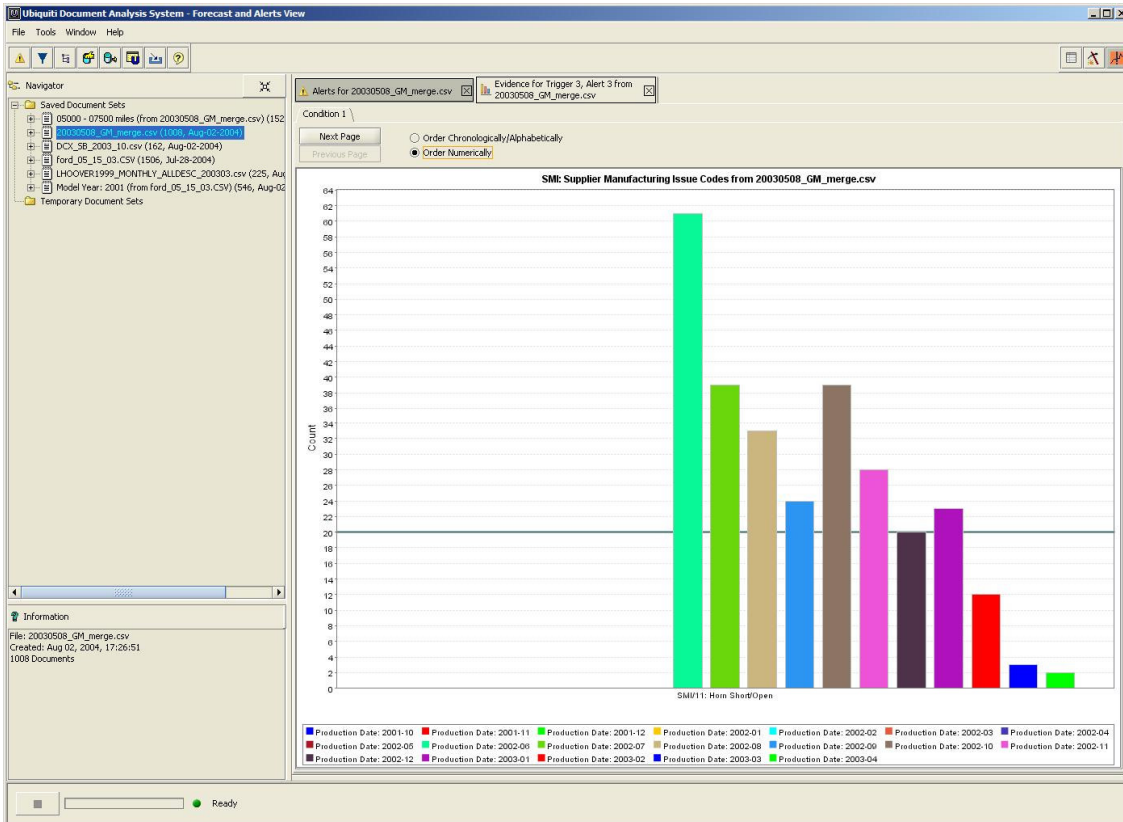
Created: Mar 01, 2005, 10:09:23

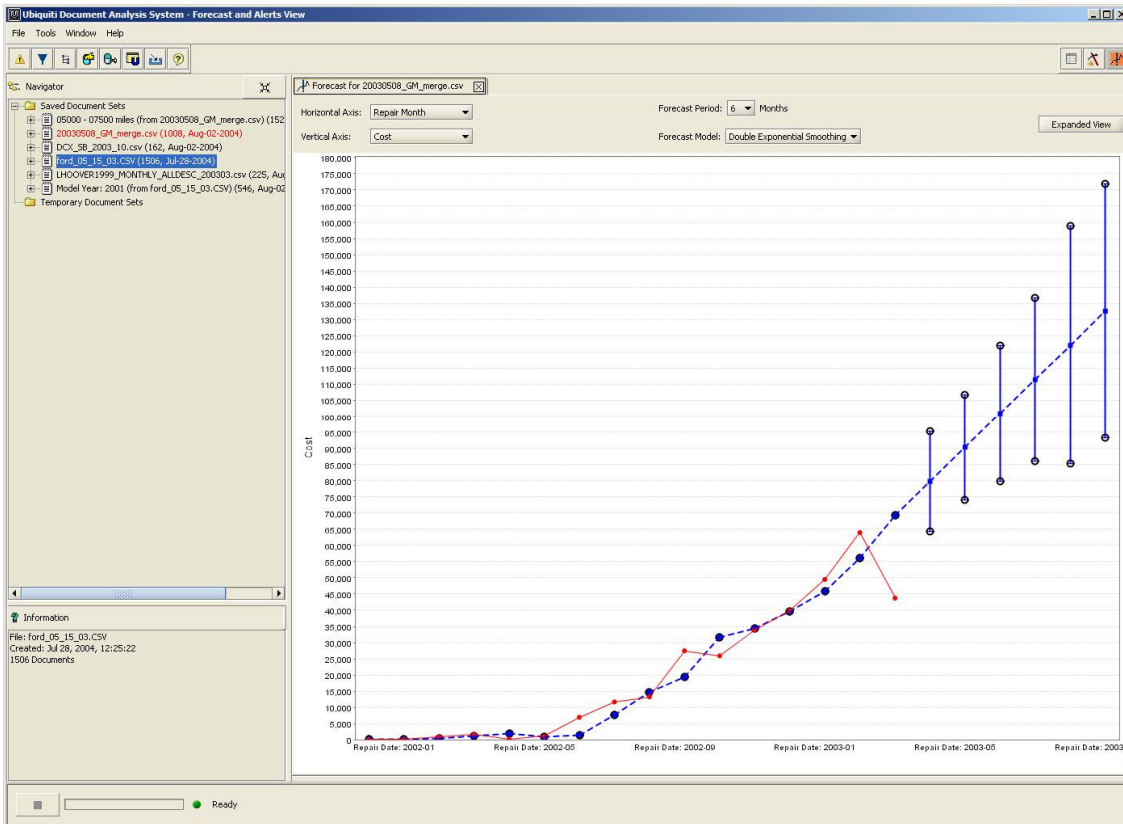
3521 Records

Ready



Screenshots from Ubiquiti FAST





Screenshots from Ubiquiti FAST

